

K REX KRALJ



Seat upholstery



Seat and back upholstery



Full upholstery

SHELL LOUNGE CHAIR

Lounge Chair, designer Niko Kralj, 1956

Weights and volumes

Product weight (kg)	5,3
Nett. weight product including packaging (kg)	7,3
Nett. Size packaging (cm) (d x w x h)	65 x 56 x 80

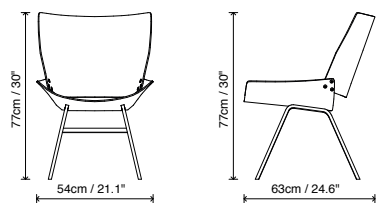
Product weight (lb)	11,7
Nett. weight product including packaging (lb)	16,1
Nett. Size packaging (inches) (w x d x h)	22,0 x 25,6 x 31,5

Material	oak or walnut plywood seat and back & powdercoated steel frame upholstery PU foam
-----------------	--

Strenght & stability	Complies with level 1, according to EN16139:2013 and with reference to norms EN1728:2012 & EN1022:2015
---------------------------------	--

Fire rating	CMHR foam compliant to TB117 / BS5852 crib 5 optional
--------------------	---

Product measurements



Finishes



natural oak



natural walnut

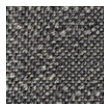


black oak

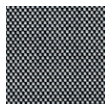


steel parts
black
powdercoated

Fabric and leathers



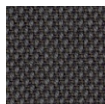
Novak



Rohi Novum



Kvadrat
Harald 3



Kvadrat
Steelcut Trio 3



Kvadrat
Mosaic 2



Mastrotto
Linea



Sorensen
Dunes